

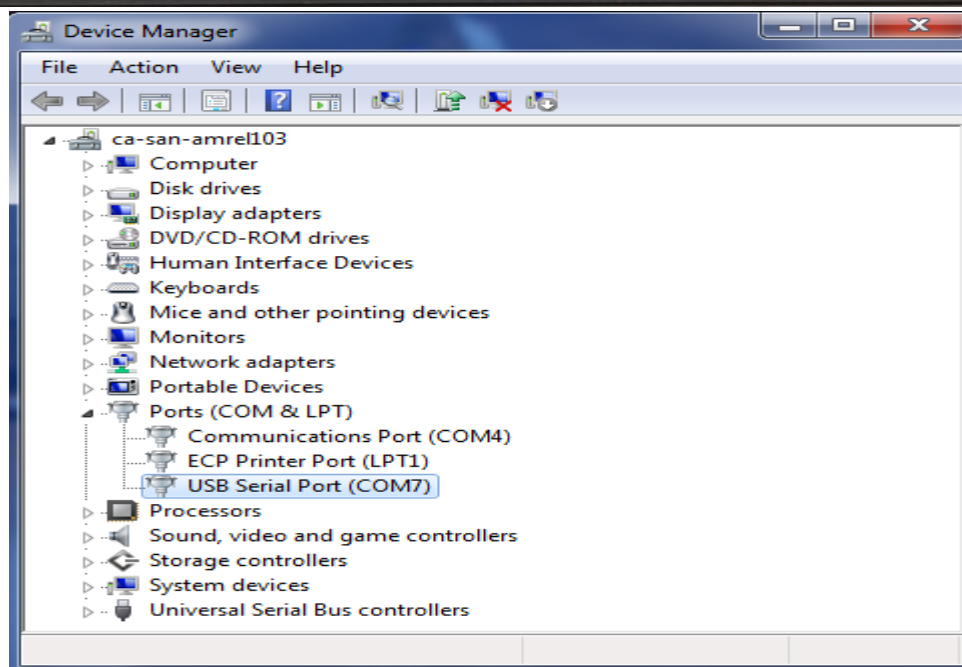
NOTE: Firmware upgrade to version 2.29 can only be done from version 2.21 and above. Firmware versions lower than 2.21 will need to be returned to the factory for the upgrade.

WARNING: Do **NOT** upload any other file other than the HEX file provided using the updater. Doing so will cause damage to the unit and will need to be returned back to our factory for repair.

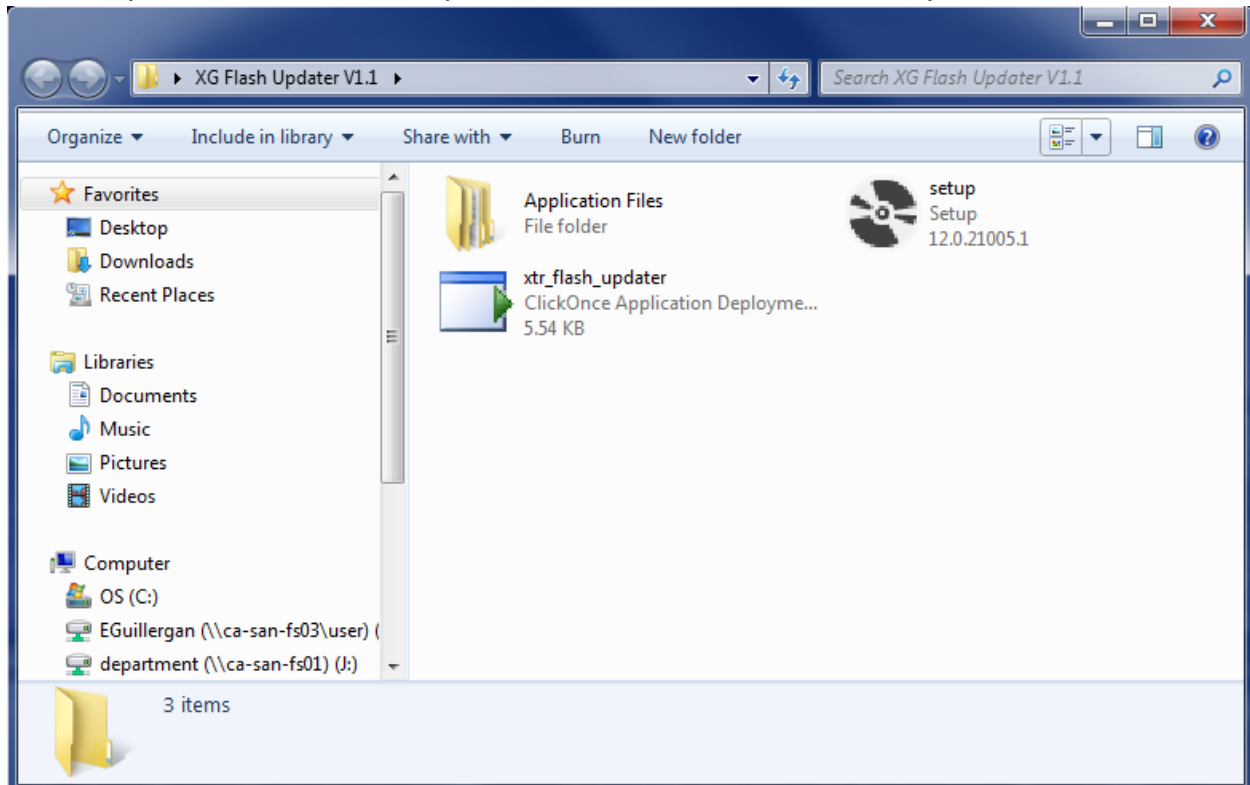
Folders Provided:

- 4370370-17
- XG Flash Updater V1.1

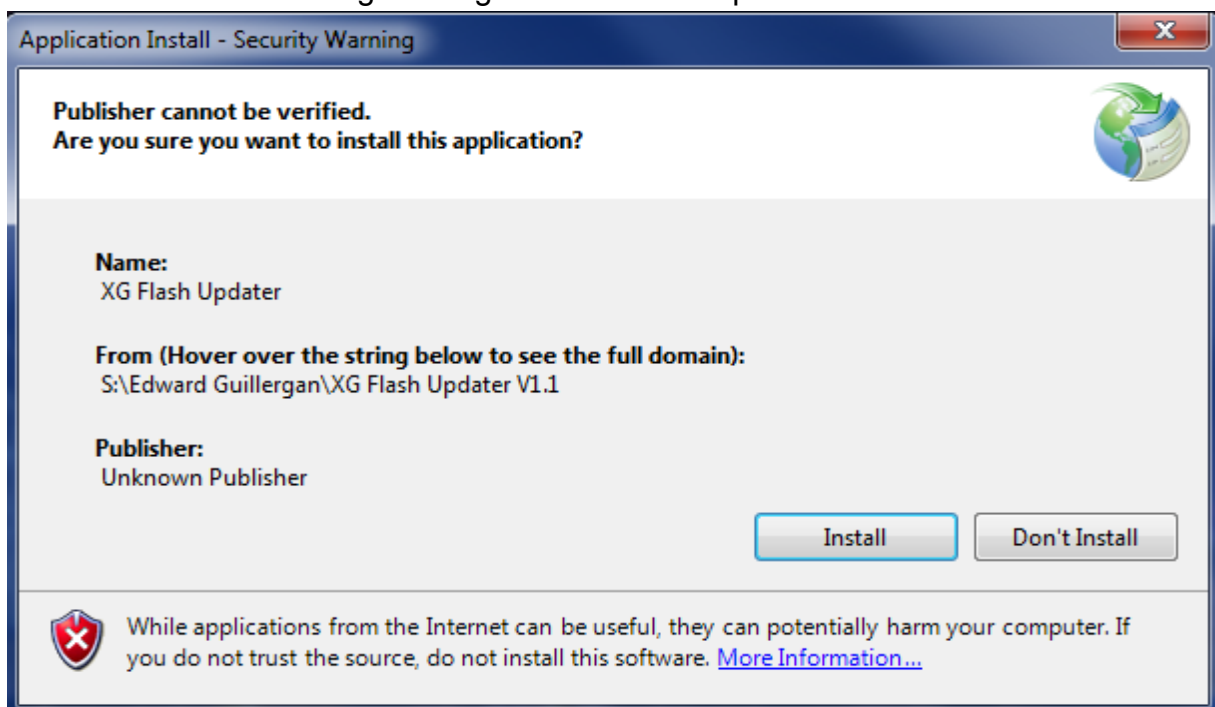
1. First power up your XG unit and select a remote interface. The upgrade can either be done through **USB** or **RS232**. If you are using USB, note that you will need to install a virtual COM port via instructions from the operating manual.



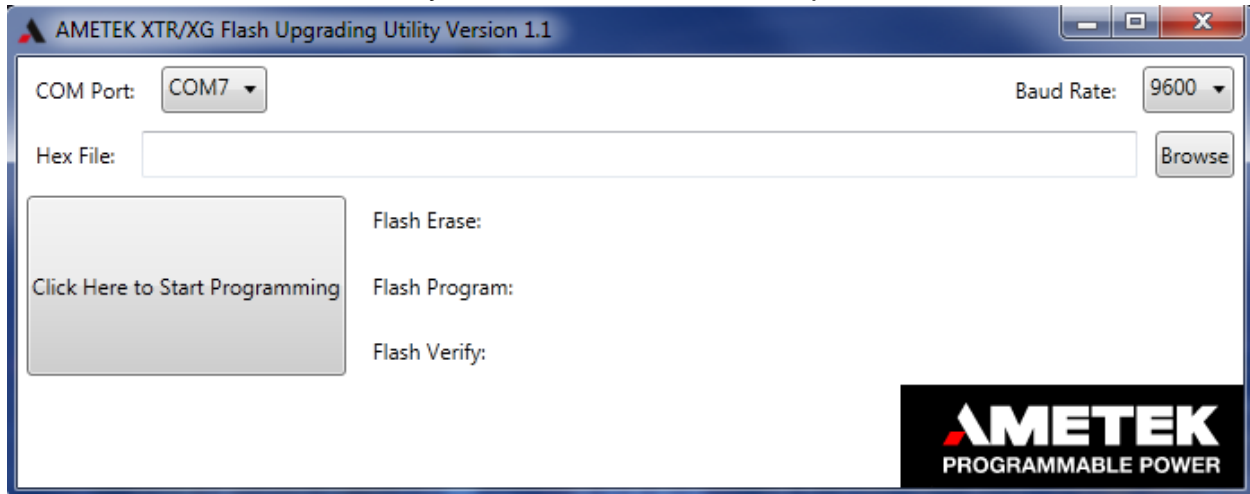
2. Open folder XG Flash Updater V1.1 and click the file “setup”



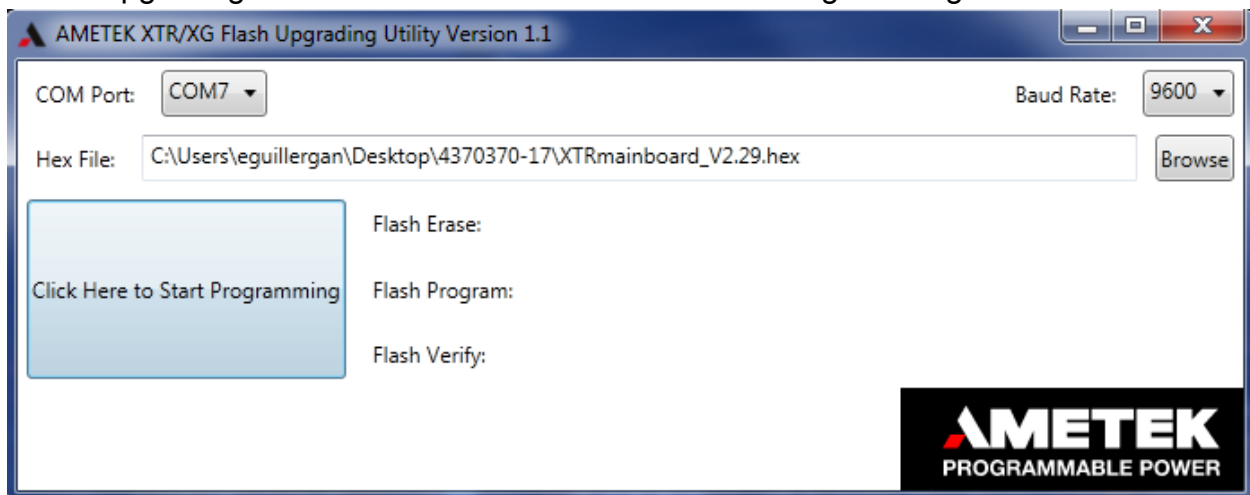
3. Click “Install” and go through the installation procedure.



4. The flash upgrading utility should pop up as shown below. Make sure the baud rate is set to **9600** and you have the correct COM port set.



5. Next, from the upgrading utility, click browse and open the folder 4370370-17. Choose the HEX file, "XTRmainboard_V2.29.hex". You are now ready to begin upgrading. Click the button "Click Here to Start Programming".



6. Let the upgrade process run its course. During the process, the front panel display should convey "PROG FLA". When it's finished, the computer screen should prompt you to power cycle. Once you power cycle, you should see "VER 2.29" from the display during the boot up. You may also see "FLA FAIL" from the display. To clear it, power cycle and do a soft reset by pressing and holding "MAIN" and "AUX" buttons from the front panel for a few seconds while powering up. The display should convey "PSU CLR". After you do this, the error should not come up anymore after a boot up.